

4

3

2

1

D

C

B

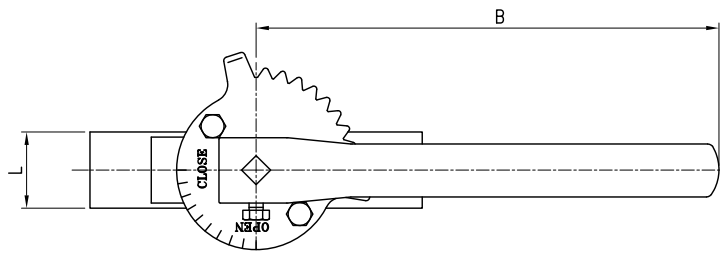
A

D

C

B

A



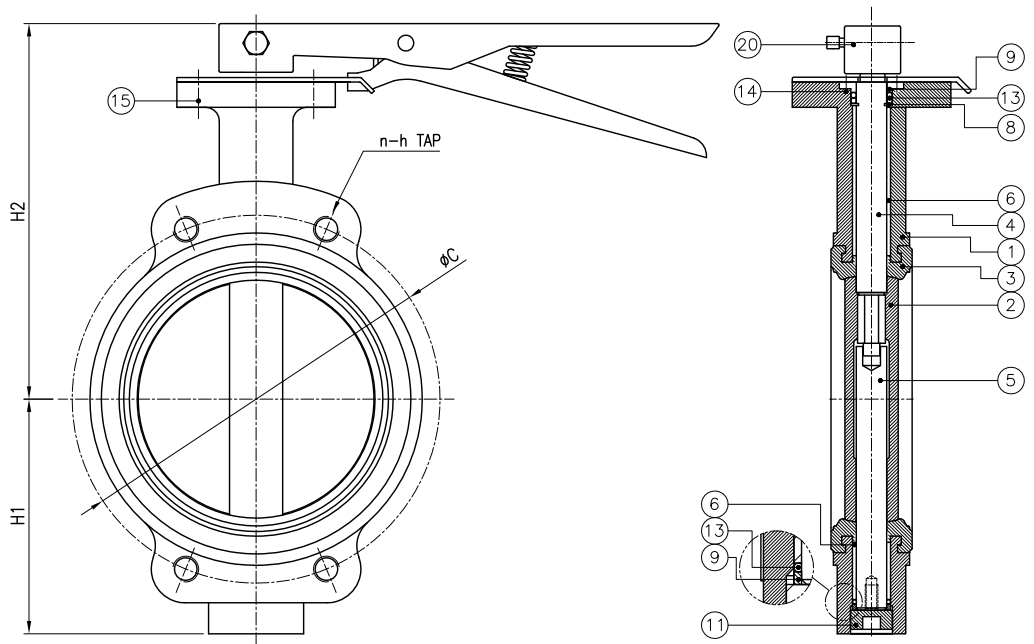
| DIMENSIONS | | | | | | | UNIT: mm |
|------------------|----|----------------|---------|-----------|-----|-----|--------------|
| NOMINAL DIAMETER | L | FLANGE(NOTE.1) | | REFERENCE | | | MODEL No. |
| | | øC | n-h TAP | H1 | H2 | B | |
| 50A(2") | 43 | 105 | 4-M12 | 70 | 161 | 265 | G10-SL-02-L |
| 65A(2 1/2") | 46 | 130 | 4-M12 | 80 | 173 | 265 | G10-SL-2.5-L |
| 80A(3") | 46 | 145 | 4-M16 | 102 | 183 | 265 | G10-SL-03-L |
| 100A(4") | 52 | 165 | 4-M16 | 115 | 197 | 265 | G10-SL-04-L |
| 125A(5") | 56 | 200 | 4-M16 | 140 | 211 | 265 | G10-SL-05-L |
| 150A(6") | 56 | 230 | 4-M16 | 151 | 223 | 265 | G10-SL-06-L |
| 200A(8") | 60 | 280 | 4-M20 | 180 | 263 | 400 | G10-SL-08-L |

FLANGE RATING : JIS 5K(Sample)

| P.NO | PART NAME | MATERIAL | Q'TY | REMARK |
|------|---------------------|----------------------------|------|--------------------------|
| 1 | BODY | DUCTILE IRON CAST STEEL | 1 | FC450, SC480 A216 WCB |
| 2 | DISC | ST.ST. / ALBC | 1 | SCS13/14, ALBC NOTE.4 |
| 3 | SEAT | RUBBER | 1 | NBR/EPDM/WITON NOTE.4 |
| 4 | STEM (UPPER) | ST.ST. | 1 | SUS304/316/410 NOTE.4 |
| 5 | STEM (LOWER) | ST.ST. | 1 | SUS304/316/410 NOTE.4 |
| 6 | BUSH | BRONZE | 1SET | (C83600) |
| 8 | ANTI-BLOW OUT RING | ST.ST. | 1SET | (A240 T304) |
| 9 | GLAND RING | ST.ST. | 1SET | (A240 T304) |
| 11 | BOTTOM COVER | ST.ST. | 1 | (A276 T304) |
| 13 | PACKING | RUBBER | 1SET | - |
| 14 | GLAND BOLT | ST.ST. | 1SET | (A193 B8) |
| 15 | ACTUATOR STAND BOLT | ST.ST. | 1SET | (A193 B8) |
| 20 | LEVER | SS400 | 1 | |

NOTES

- The Flange rating on the drawing shall be in accordance with National Standard.
The rating shall be provided conforming 5K/10K/16K for JIS B2220 5K/10K/16K, 150LB for ANSI B 16.5 150LB, PN6/10/16 for ISO 7005 PN6/10/16.
- VALVE TEST : AS PER JIS F7480
 - Shell Test (Working Pressure X 1.5)
EX. JIS 5K : 7.5 kg/cm2
 - Seat Test (Working Pressure X 1.1)
EX. JIS 5K : 5.5 kg/cm2
- Flange Finish
 - Wafer type : N/A
 - Lug type : RF
 - Flange type : FF
- Valve materials are subject to customer requirements.
- Please fill out the model number, flange Rating, and material on the order form



| NO | DATE | DESCRIPTION | DRA. | DES. | CHK. | APP. |
|-----------|------|--|--------|-------|------------|------|
| TITLE | | CONCENTRIC SEMI-LUG TYPE BUTTERFLY VALVE | | | | |
| SUB.TITLE | | LEVER OPERATED BUTTERFLY VALVE | | | | |
| DRA. | DES. | CHK. | APP. | SCALE | N. S | |
| J.H KIM | | KEVIN.C | CG.LEE | DATE | 2023.11.10 | |
| | | | | DWG/N | CSN0208ABA | |

GW Korea Co.,Ltd.

4

3

2

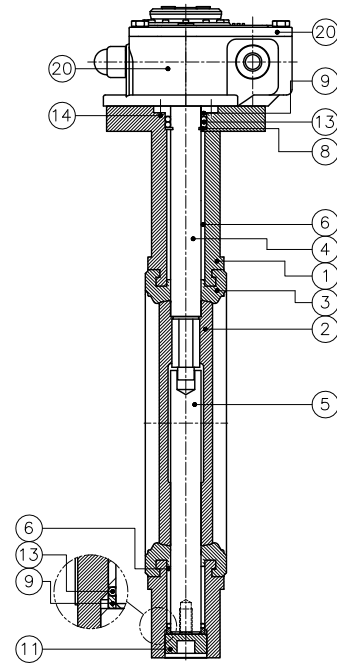
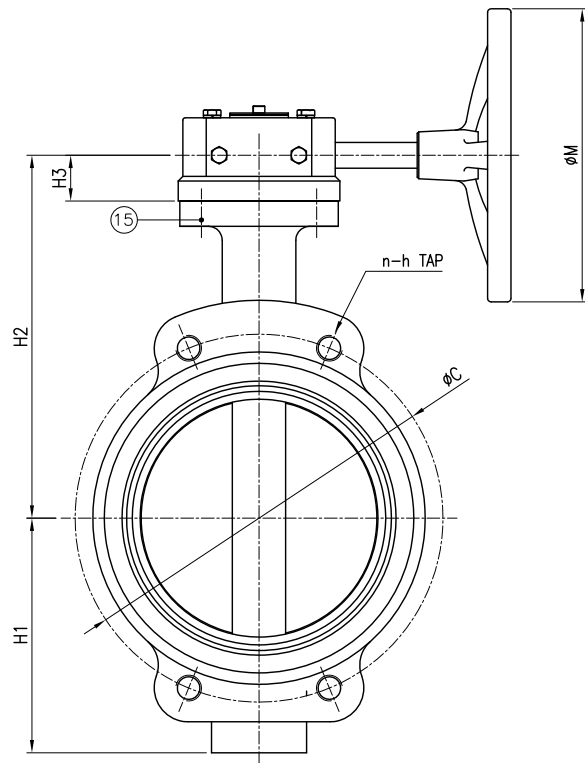
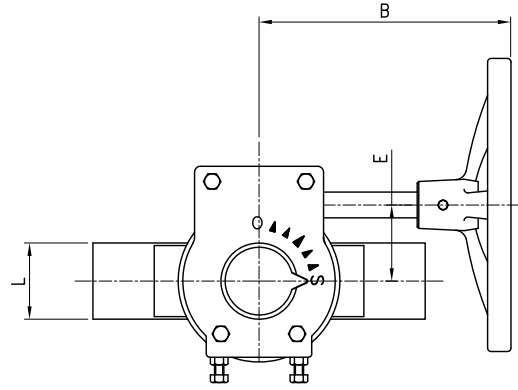
1



| DIMENSIONS | | | | | | | | | | UNIT: mm | MODEL No. |
|------------------|----|----------------|---------|-----------|-----|----|-----|----|-----|--------------|-----------|
| NOMINAL DIAMETER | L | FLANGE(NOTE.1) | | REFERENCE | | | | | | | |
| | | φC | n-h TAP | H1 | H2 | H3 | B | E | φM | | |
| 50A(2") | 43 | 105 | 4-M12 | 70 | 156 | 28 | 135 | 45 | 150 | G10-SL-02-G | |
| 65A(2 1/2") | 46 | 130 | 4-M12 | 80 | 168 | 28 | 135 | 45 | 150 | G10-SL-2.5-G | |
| 80A(3") | 46 | 145 | 4-M16 | 102 | 178 | 28 | 135 | 45 | 150 | G10-SL-03-G | |
| 100A(4") | 52 | 165 | 4-M16 | 115 | 193 | 28 | 135 | 45 | 150 | G10-SL-04-G | |
| 125A(5") | 56 | 200 | 4-M16 | 140 | 205 | 28 | 135 | 45 | 150 | G10-SL-05-G | |
| 150A(6") | 56 | 230 | 4-M16 | 151 | 218 | 28 | 135 | 45 | 150 | G10-SL-06-G | |
| 200A(8") | 60 | 280 | 4-M20 | 180 | 266 | 36 | 205 | 65 | 200 | G10-SL-08-G | |
| 250A(10") | 68 | 345 | 4-M20 | 216 | 306 | 36 | 205 | 65 | 200 | G10-SL-10-G | |
| 300A(12") | 78 | 390 | 4-M20 | 250 | 346 | 36 | 205 | 65 | 200 | G10-SL-12-G | |
| 350A(14") | 78 | 435 | 4-M20 | 276 | 371 | 36 | 205 | 65 | 200 | G10-SL-14-G | |

FLANGE RATING : JIS 5K(Sample)

| P.NO | PART NAME | MATERIAL | Q'TY | REMARK |
|------|---------------------|----------------------------|------|---------------------------|
| 1 | BODY | DUCTILE IRON CAST STEEL | 1 | FC450, SC480, A216 WCB |
| 2 | DISC | ST.ST. / ALBC | 1 | SCS13/14, ALBC NOTE.4 |
| 3 | SEAT | RUBBER | 1 | NBR/EPDM/WITON NOTE.4 |
| 4 | STEM (UPPER) | ST.ST. | 1 | SUS304/316/410 NOTE.4 |
| 5 | STEM (LOWER) | ST.ST. | 1 | SUS304/316/410 NOTE.4 |
| 6 | BUSH | BRONZE | 1SET | (C83600) |
| 8 | ANTI-BLOW OUT RING | ST.ST. | 1SET | (A240 T304) |
| 9 | GLAND RING | ST.ST. | 1SET | (A240 T304) |
| 11 | BOTTOM COVER | ST.ST. | 1 | (A276 T304) |
| 13 | PACKING | RUBBER | 1SET | - |
| 14 | GLAND BOLT | ST.ST. | 1SET | (A193 B8) |
| 15 | ACTUATOR STAND BOLT | ST.ST. | 1SET | (A193 B8) |
| 20 | GEAR BOX | ASS'Y | 1 | |



NOTES

- The Flange rating on the drawing shall be in accordance with National Standard.
The rating shall be provided conforming 5K/10K/16K for JIS B2220 5K/10K/16K, 150LB for ANSI B 16.5 150LB, PN6/10/16 for ISO 7005 PN6/10/16.
- VALVE TEST : AS PER JIS F7480
- Shell Test (Working Pressure X 1.5)
EX. JIS 5K : 7.5 kg/cm²
- Seat Test (Working Pressure X 1.1)
EX. JIS 5K : 5.5 kg/cm²
- Flange Finish
- Wafer type : N/A
- Lug type : RF
- Flange type : FF
- Valve materials are subject to customer requirements.
- Please fill out the model number, flange Rating, and material on the order form

| NO | DATE | DESCRIPTION | DRA. | DES. | CHK. | APP. |
|-----------|------|--|--------|-------|------------|------|
| TITLE | | CONCENTRIC SEMI-LUG TYPE BUTTERFLY VALVE | | | | |
| SUB.TITLE | | GEAR OPERATED BUTTERFLY VALVE | | | | |
| DRA. | DES. | CHK. | APP. | SCALE | N. S | |
| J.H KIM | | KEVIN.C | CG.LEE | DATE | 2023.11.10 | |
| | | | | DWG/N | CSN0214ACA | |

GW Korea Co.,Ltd.

D I M E N S I O N S Unit : mm

| NOMINAL DIAMETER | L | FLANGE(NOTE.1) | | R E F E R E N C E | | | | | | | MODEL No. |
|------------------|-----|----------------|---------|-------------------|-----|----|-----|-----|-----|-------------|-----------|
| | | ∅C | n-h TAP | H1 | H2 | H3 | B | E | ∅M | | |
| 400(16") | 102 | 495 | 4-M22 | 330 | 416 | 46 | 255 | 80 | 300 | G10-SL-16-G | |
| 450(18") | 114 | 555 | 4-M22 | 380 | 436 | 46 | 255 | 80 | 300 | G10-SL-18-G | |
| 500(20") | 127 | 605 | 4-M22 | 415 | 485 | 65 | 320 | 120 | 400 | G10-SL-20-G | |
| 550(22") | 154 | 665 | 4-M24 | 440 | 527 | 65 | 320 | 120 | 400 | G10-SL-22-G | |
| 600(24") | 154 | 715 | 4-M24 | 470 | 560 | 65 | 320 | 120 | 400 | G10-SL-24-G | |
| 650(26") | 165 | 770 | 4-M24 | 487 | 590 | 65 | 320 | 120 | 400 | G10-SL-26-G | |
| 700(28") | 165 | 820 | 4-M24 | 512 | 620 | 65 | 345 | 30 | 400 | G10-SL-28-G | |
| 750(30") | 190 | 880 | 4-M30 | 550 | 655 | 65 | 345 | 30 | 400 | G10-SL-30-G | |
| 800(32") | 190 | 930 | 4-M30 | 591 | 705 | 65 | 345 | 30 | 400 | G10-SL-32-G | |

FLANGE RATING : JIS 5K(Sample)

| P.NO | PART NAME | MATERIAL | Q'TY | REMARK |
|------|---------------------|----------------------------|------|---------------------------|
| 1 | BODY | DUCTILE IRON CAST STEEL | 1 | FC450, SC480, A216 WCB |
| 2 | DISC | ST.ST. / ALBC | 1 | SCS13/14, ALBC NOTE.4 |
| 3 | SEAT | RUBBER | 1 | NBR/EPDM/WITON NOTE.4 |
| 4 | STEM (UPPER) | ST.ST. | 1 | SUS304/316/410 NOTE.4 |
| 5 | STEM (LOWER) | ST.ST. | 1 | SUS304/316/410 NOTE.4 |
| 6 | BUSH | BRONZE | 1SET | (C83600) |
| 8 | ANTI-BLOW OUT RING | ST.ST. | 1SET | (SUS304) |
| 9 | GLAND RING | ST.ST. | 2 | (SUS304) |
| 11 | BOTTOM COVER | ST.ST. | 1 | (SUS304) |
| 13 | PACKING | RUBBER | 1SET | - |
| 14 | GLAND BOLT | ST.ST. | 1SET | (SUS304) |
| 15 | ACTUATOR STAND BOLT | ST.ST. | 1SET | (SUS304) |
| 20 | GEAR BOX | ASS'Y | 1 | |

NOTES

- The Flange rating on the drawing shall be in accordance with National Standard.
The rating shall be provided conforming 5K/10K/16K for JIS B2220 5K/10K/16K, 150LB for ANSI B 16.5 150LB, PN6/10/16 for ISO 7005 PN6/10/16.
- VALVE TEST : AS PER JIS F7480
- Shell Test (Working Pressure X 1.5)
EX. JIS 5K : 7.5 kg/cm²
- Seat Test (Working Pressure X 1.1)
EX. JIS 5K : 5.5 kg/cm²
- Flange Finish
- Wafer type : N/A
- Lug type : RF
- Flange type : FF
- Valve materials are subject to customer requirements.
- Please fill out the model number, flange Rating, and material on the order form

| 3 | | | | | | |
|--------------------------|------|--|--------|-------|------------|------|
| 2 | | | | | | |
| 1 | | | | | | |
| NO | DATE | DESCRIPTION | DRA. | DES. | CHK. | APP. |
| TITLE | | CONCENTRIC SEMI-LUG TYPE BUTTERFLY VALVE | | | | |
| SUB.TITLE | | GEAR OPERATED BUTTERFLY VALVE | | | | |
| DRA. | DES. | CHK. | APP. | SCALE | N. S | |
| J.H KIM | | KEVIN.C | CG.LEE | DATE | 2023.11.10 | |
| | | | | DWG/N | CSN1632ACA | |
| GW Korea Co.,Ltd. | | | | | | |

4

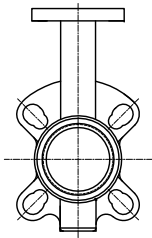
3

2

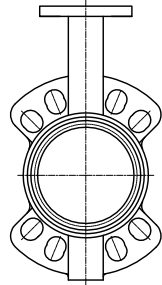
1

<REFERCNC E FOR VALVE OUT DRAWING>

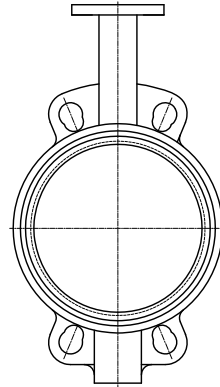
WAFER



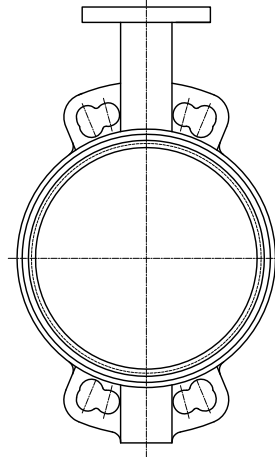
SIZE : 50A~65A



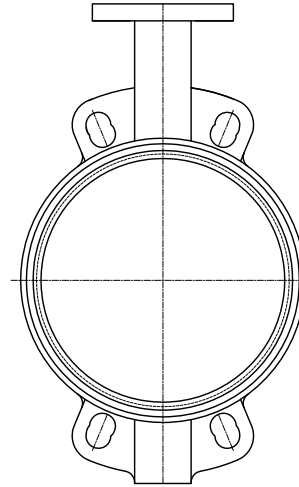
80A~100A



125A~150A

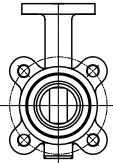


200A~300A

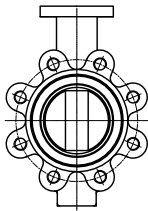


350A

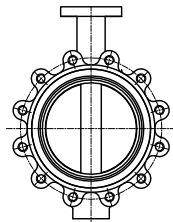
LUG



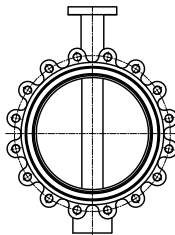
- 5K 50A~80A.
- 10K 50A~65A.
- 150LB 50A~80A.



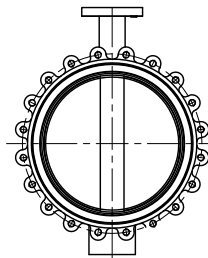
- 5K 100A~200A.
- 10K 80A~150A.
- 150LB 100A~200A.



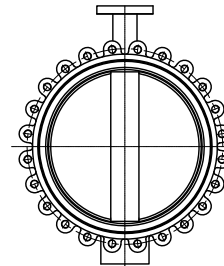
- 5K 250A~350A.
- 10K 200A~250A.
- 150LB 250A~350A.



- 5K 400A~450A.
- 10K 300A~400A.
- 150LB 400A~450A.



- 5K 500A~600A.
- 10K 450A~550A.
- 150LB 500A~600A.



- 5K 650A~850A.
- 10K 600A~750A.
- 150LB -

| | | | | | | |
|--------------------------|------|------------------------------|--------|-------|------------|------|
| NO | DATE | DESCRIPTION | DRA. | DES. | CHK. | APP. |
| TITLE | | CONCENTRIC REFERENCE DRAWING | | | | |
| SUB.TITLE | | CONCENTRIC BUTTERFLY VALVE | | | | |
| DRA. | DES. | CHK. | APP. | SCALE | N. S | |
| J.H KIM | | KEVIN.C | CG.LEE | DATE | 2022.04.27 | |
| | | | | DWG/N | REF-OUT-RO | |
| GW Korea Co.,Ltd. | | | | | | |

4

3

2

1