

4

3

2

1

P.NO	PART NAME	MATERIAL	Q'TY	REMARK
1	BODY	DUCTILE IRON	1	FCD450
2	DISC	AL-BRONZE	1	(C95400)
3	SEAT	RUBBER	1	NBR
4	STEM (UPPER)	ST.ST.	1	SUS304
5	STEM (LOWER)	ST.ST.	1	SUS304
6	BUSH	BRONZE	1SET	(C83600)
8	ANTI-BLOW OUT RING	ST.ST.	1SET	SUS304
9	GLAND RING	ST.ST.	1SET	SUS304
11	BOTTOM COVER	STEEL	1	SS400
13	PACKING	RUBBER	1SET	NBR
14	GLAND BOLT	ST.ST.	1SET	SUS304
15	ACTUATOR STAND BOLT	ST.ST.	1SET	SUS304

DIMENSIONS							UNIT: mm
NOMINAL DIAMETER	L	FLANGE		REFERENCE			
		ϕC	n-h(tap)	H1	H2	WEIGHT (APPROX. Kg)	
400A(16")	102	495	4-M22(DP.25)	330	400	75.5	
450A(18")	114	555	4-M22(DP.25)	380	430	98.5	
500A(20")	127	605	4-M22(DP.25)	415	470	131.5	
550A(22")	154	665	4-M24(DP.25)	440	495	180	
600A(24")	154	715	4-M24(DP.25)	470	525	215	

FLANGE RATING : JIS 5K

NOTES

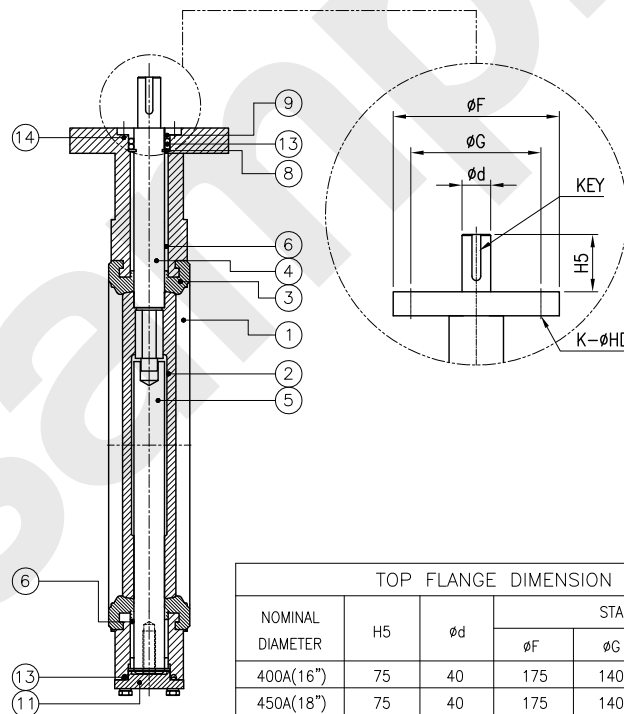
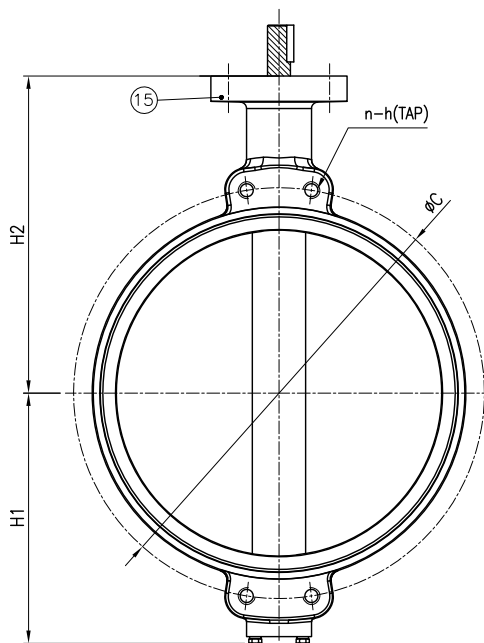
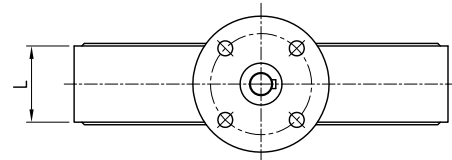
1. HYDROSTATIC TEST AS PER API 598

Check	Description	H.Y.D TEST PRESS	Working pressure
<input type="checkbox"/>	BODY	Working pressure x 1.5time	
<input type="checkbox"/>	SEAT	Working pressure x 1.1time	
<input checked="" type="checkbox"/>	JIS 5K BODY	7.5 bar (water)	
<input checked="" type="checkbox"/>	JIS 5K SEAT	5.5 bar (water)	

2. BODY MARKING

BODY MARKING
GVK
SIZE
5K
MATERIAL

3. DESIGN STANDARD : JIS F7480



TOP FLANGE DIMENSION							UNIT: mm
NOMINAL DIAMETER	H5	ϕd	STADNARD. ISO 5211				
			ϕF	ϕG	K- ϕHD	KEY	
400A(16")	75	40	175	140	4- $\phi 18$	12x8x60L	
450A(18")	75	40	175	140	4- $\phi 18$	12x8x60L	
500A(20")	105	45	210	165	4- $\phi 22$	14x9x85L	
550A(22")	105	55	210	165	4- $\phi 22$	14x9x85L	
600A(24")	105	65	210	165	4- $\phi 22$	18x11x85L	

NO	DATE	DESCRIPTION	DRA.	DES.	CHK.	APP.
A	2023.06.09	FOR APPROVAL				
TITLE		CONCENTRIC SEMI-LUG TYPE JIS 5K				
SUB.TITLE		BEAR SHAFT YYPE BUTTERFLY VALVE				
DRA.	DES.	CHK.	APP.	SCALE	N. S	
				DATE	2023.03.21	
				DWG/N	CSN1624BCA	

GVKOREA CO.,LTD.