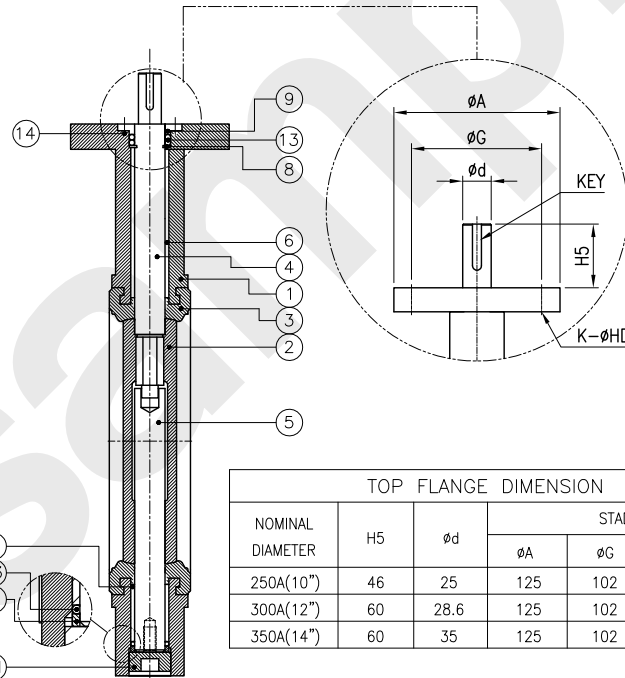
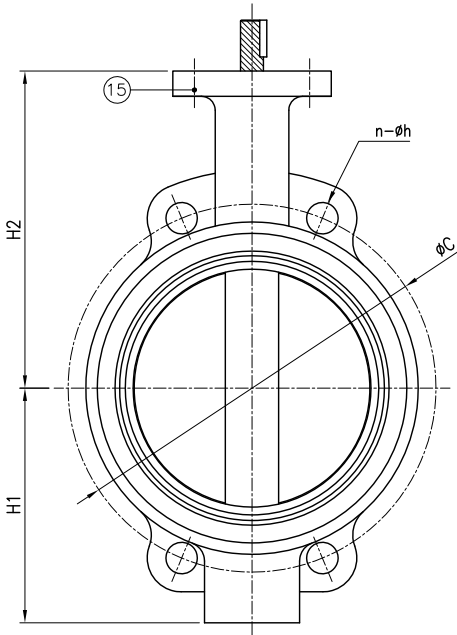


DIMENSIONS							UNIT: mm
NOMINAL DIAMETER	L	FLANGE		REFERENCE			
		ϕC	$n-\phi h$	H1	H2	WEIGHT (APPROX. Kg)	
250A(10")	68	MULTI	MULTI	216	286	24.3	
300A(12")	78			250	310	38	
350A(14")	78			276	346	43	

FLANGE RATING : MULTI(JIS 5&10K, PN6&10, 150LB)



TOP FLANGE DIMENSION							UNIT: mm
NOMINAL DIAMETER	H5	ϕd	STADNARD. ISO 5211				
			ϕA	ϕG	K- ϕHD	KEY	
250A(10")	46	25	125	102	4- $\phi 12$	8x7x30L	
300A(12")	60	28.6	125	102	4- $\phi 12$	6.4x6.4x20L	
350A(14")	60	35	125	102	4- $\phi 12$	10x8x40L	

P.NO	PART NAME	MATERIAL	Q'TY	REMARK
1	BODY	DUCTILE IRON	1	FCD450
2	DISC	ST.ST(SCS13)	1	1.4308
3	SEAT	RUBBER	1	NBR
4	STEM (UPPER)	ST.ST.	1	SUS420
5	STEM (LOWER)	ST.ST.	1	SUS420
6	BUSH	BRONZE	1SET	(C83600)
8	ANTI-BLOW OUT RING	ST.ST.	1SET	(A240 T304)
9	GLAND RING	ST.ST.	1SET	(A240 T304)
11	BOTTOM COVER	ST.ST.	1	(A276 T304)
13	PACKING	RUBBER	1SET	NBR
14	GLAND BOLT	ST.ST.	1SET	(A193 B8)
15	ACTUATOR STAND BOLT	ST.ST.	1SET	(A193 B8)

NOTES

1. HYDROSTATIC TEST AS PER API 598

Check	Description	H.Y.D TEST PRESS	Working pressure
<input checked="" type="checkbox"/>	BODY	Design pressure x 1.5time	
<input checked="" type="checkbox"/>	SEAT	Design pressure x 1.1time	
<input type="checkbox"/>	BODY	- bar (water)	
<input type="checkbox"/>	SEAT	- bar (water)	

2. BODY MARKING

BODY MARKING
GVK SIZE 5K/10K PN6/PN10 150LB MATERIAL

3. DESIGN STANDARD : JIS F7480

NO	DATE	DESCRIPTION	DRA.	DES.	CHK.	APP.
B	2023.03.23	FOR APPROVAL				

TITLE		CONCENTRIC WAFER TYPE MULTI				
SUB.TITLE		GEAR OPERATED BUTTERFLY VALVE				
DRA.	DES.	CHK.	APP.	SCALE	N. S	
				DATE	2023.03.21	
				DWG/N	CWN0214BC0	

GVKOREA CO.,LTD.